

Partnering for Sustainable Resource Management

Tl'azt'en Nation and the University of Northern British Columbia



What's happening? Find out what the CURA Streams have been doing and are working on now!

Spring 2008

Ecotourism Stream

The Ecotourism stream of the CURA project led by **Amelia Stark** (Tl'azt'en Nation) and **Pam Wright** (UNBC) started in earnest in 2007 with work in three main areas:

- Inventory ~ Identification of potential sites, features, locations for ecotourism in Tl'azt'en territory;
- Tl'azt'en Perspectives ~ Examination of Tl'azt'en perspectives on potential benefits and impacts of tourism and on the level or type of interaction preferred;
- Market Demand ~ Exploration of the potential Aboriginal tourism market - focusing on preferences for Aboriginal tourism product features and attributes.

~What are the Sites, Features or Potential Locations for Ecotourism in Tl'azt'en Traditional Territory?

What are the special places - like waterfalls or camping sites- that a tourist might be interested in visiting? What aspects of Tl'azt'en culture - like watching or participating in the preparation of traditional foods or tanning moose hides - could provide tourists with a deeper understanding of Tl'azt'en culture? A key part of our research is to understand what is special and unique about Tl'azt'en traditional territory, and how that might be helpful in determining the potential for tourism. In 2007 Tl'azt'en Research Assistant, **Zaa Derik Joseph**, started conducting interviews to collect some of this information. Suggestions by Tl'azt'enne at community days and open houses regarding further data collection will inform our data collection process for the 2008 season. 2008 field work will include team members and graduate research assistant **Melanie Grubb** who will map the information in a Geographic Information System. This information will then be verified with community members. Verified sites, locations, and features can be used in tourism planning. If you know of someplace that is special that you think tourists would enjoy - let us know!!

~How do Tl'azt'enne Want to be Involved with Tourism?

Graduate student **Shane Hartman** held a very well attended community orientation workshop in early February (Mussi Cho everyone!). The purpose of the workshop was to present background information and examples from other locations to community members. Building on this foundation, Shane and Tl'az-



t'en Research Assistant, **Deborah Page**, will be conducting in-depth interviews, over the next two months to determine what specific benefits and impacts Tl'azt'enne are looking for from tourism. In addition, Tl'azt'enne will be asked how they would like to be involved with tourism and tourists. Also, the researchers will be interested to know whether community members can identify any key people or locations that might offer potential for tourism development. The results of this component of the research will be shared in fact sheets and workshops as well as in a thesis. If you haven't already signed up for an interview and would like to participate - please contact Amelia Stark or Deborah Page at 996-0028 (JPRF office).

-Who is Interested in Aboriginal Tourism?

Graduate student **Diana Kutzner** is working to help identify characteristics of potential tourists and to explore what types of features, opportunities and attributes of products these tourists are looking for. Diana has prepared two bibliographies summarizing the existing aboriginal tourism literature (available at <http://cura.unbc.ca>) and a fact sheet (The Aboriginal Tourism Market) summarizing the main findings of the research. Over the summer of 2007 Diana conducted a survey of over 300 visitors to Northern BC to identify what they would like to see and do. She is currently analyzing and writing up the results of her research and hopes to complete her writing this spring. Diana will come back to the community to share the results of her research in a community workshop. In addition to the community workshop and her thesis, she will prepare material for the website and other fact sheets highlighting key findings.



Next Steps

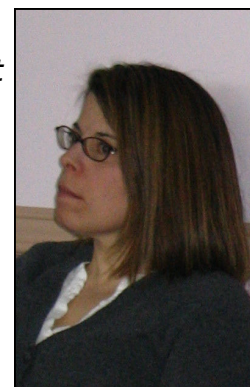
Completing the three components of the Ecotourism Stream (Inventory, Tl'azt'en Nation perspectives, and Market Demand) is the priority for 2008. Our hope is that by early fall we'll have all of the research completed and will be able to hold a series of community workshops working through the results and helping Tl'azt'enne identify the next steps to take in tourism planning.

Traditional Ecological Knowledge Stream

Leona Shaw, an MNRES candidate, is studying *The Ecology of Food and Medicine Plant Gathering Sites as Defined by Tl'azt'en Nation*. She has spent much time in the community over the last year getting to know people. An information session was held in the fall at the Elders Centre for Tl'azt'en community members where the project was introduced to everyone and a list of 32 plants, identified as important food/medicine plants, was generated. Another meeting was held a little later at the Elders centre with members who had agreed to participate in the study. The list of 32 plants was then reduced to 15 in order to make the project more manageable. A survey was developed over the last months and Leona is presently taking part in interviewing each participant individually about their knowledge of food and medicine plants. Last year she produced a project brochure which was given to participants and is also available at the Education Centre. Leona has been collecting information relating to the ecology of each of the 15 plants through library research. During the rest of this year, Leona's project will involve field interviews in the spring and summer to complement the interviews taking place now. Leona will present her work at the Community Day, and start to write her thesis in the fall.



Claudette Bois, a PhD NRES candidate is working on the other TEK project, *Examining the history of Tl'azt'en Nation traditional land-use practices, forest natural disturbance, and their interactions*. In the fall, Claudette started to review the transcribed oral histories at Tache; this work continues. Early this year, she met with JPRF logging supervisor, Guy Hall, and headed out to the JPRF to search for fire scarred trees in blocks that are scheduled for harvest. That day, they identified 12 possible fire scarred trees. She will be meeting with Guy again to pick up the samples (tree cookies) and transport them back to UNBC. Claudette will then commence lab work which will help her develop a fire history specific to the sampled area. Claudette is also completing coursework at UNBC for her PhD studies and is working on her research proposal.



Improved Partnership Stream



Graduate student **Deanna Yim** (project: *Evolving Co-Management Practice: Community-Based Environmental Monitoring with Tl'azt'en Nation on the John Prince Research Forest*) is currently working on her data analysis. She is analyzing transcripts from different research events conducted with Forest Team and Elders Team members over the past summer and fall. Results from this analysis will be used to develop a Tl'azt'en community-based environmental monitoring framework. The framework will be presented to Forest Team members later this spring at the final Forest Team meeting for their feedback and input. This framework will serve as the basis for an applied Tl'azt'en

community-based environmental monitoring method that can be used on the John Prince Research Forest.

Team members are currently working together with Deanna, Tl'azt'en Research Assistant, **Theresa Austin**, and the children from Mr. McKay's Gr.4,5,6,7 class at Eugene Joseph Elementary School to develop a book for the community that shares a collection of their photographs, stories, and knowledge gathered throughout this project. Another community product that will be developed from this research is a DVD. This DVD will use video footage taken from different research events to highlight themes, people, and knowledge shared in this project.

Education Stream

The Education Stream led by **Wayne Bulmer**, (Tl'azt'en Nation) is starting the final phases of its research program, the focus of which is to determine factors that cultivate a well educated Tl'azt'enne, as well as factors that act as barriers in Tl'azt'enne educational development. Ultimately the results are meant to provide a framework upon which curriculum development will hang.

Phase 1 entails a review of the previously collected research data and coding in preparation for analysis. In Phase 2 data will be analyzed. Phase 3 will include the writing of the report, followed by Phase 4-representation (poster session) of the results at a community meeting. Should time and money permit, an example of a curriculum using the discovered framework will be developed.



Community Day

***Thursday, May 15, 2008
10:30 AM to 3:00 PM
Eugene Joseph School Gym***

The CURA Community Day has been scheduled for Thursday, May 15th. The CURA Steering Committee, students, and JPRF Staff will be available to provide updates and answer your questions about on-going CURA and JPRF research projects.

**Coffee, snacks and lunch will be served.
We Look Forward To Seeing YOU There !!
DOOR PRIZES!!!**

*For more information on the Tl'azt'en Nation—UNBC CURA Project contact:
Beverly John at 996-0028 or by E-mail at bev@johnprincereseearchforest.com
Deanna Yim at 960-6357 or by E-mail at yim@unbc.ca*