



# Forest Team Update

From the project:  
*Evolving Co-management practice: community-based environmental monitoring with Tl'azt'en Nation on the John Prince Research Forest*

Issue 1, August 2007

## ~ Project information ~

This community-based environmental monitoring project is working with two groups of Tl'azt'en Nation community members to create a way to monitor and protect important plants and animals on the John Prince Research Forest, a part of Tl'azt'en territory.

The two groups of Tl'azt'en community members working on this project are:

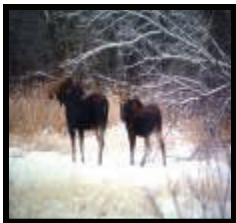
- the Forest Team (FT)
- the Elders Team (ET)

Together with the FT and ET, we will develop a community-based environmental monitoring method that incorporates the needs, beliefs, and concerns of the community.

This project is focused on developing an environmental monitoring method for one plant or animal in each of the following traditional use activities:



FT members at the first Forest Team meeting on Aug. 2, 2007 in Tache at the Elders Center.



Hunting



Trapping



Fishing



Medicinal plant gathering



Berry picking

## Forest Team Progress Update...

•At the first Forest Team meeting, Forest Team members discussed and selected one plant or animal to focus environmental monitoring on in each of the 5 traditional use activities. These were:

**Hunting**- moose

**Medicinal plant gathering**- soapberries

**Trapping**- beaver

**Berry picking**- huckleberries

**Fishing**- salmon

•Forest Team members received Photovoice training and became familiar with using this method as a way of expressing their knowledge and expertise through photographs that they take on the land. Forest Team members will be using the cameras to take photos of, or related to, the health of plants and animals selected to focus environmental monitoring on in each of the traditional use activities. Forest Team members will then explain the significance of their photos with their own words and stories at the second Forest Team meeting.



# Meet the Forest Team! (\*Additional members may join in the future)



*Michael Aslin*



*Doreen Austin*



*Harry Austin*



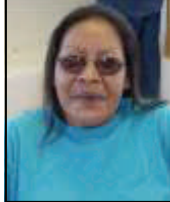
*Isaac Felix*



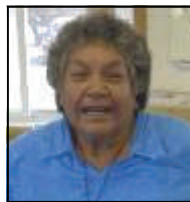
*Mary-Ann Hanson*



*Geraldine Joseph*



*Gloria Johnnie*



*Mary Lebrun*



*George Morris*



*Violet Prince*



*Nathaniel Tom*

## Elders that contributed to the first Forest Team meeting...

The Forest Team greatly appreciates the knowledge, guidance, and positive contributions that the Elders brought to the first Forest Team meeting. Both the Forest Team and project leaders look forward to and welcome their presence at future FT meetings, and we are all very excited to learn and share with them at the Elders Team Retreat at Cinnabar on August 20 and 21st.



*John Alexis*



*Marie Hanson*



*Pierre John*

### Talk to us for more information!



**Deanna Yim**  
deannayim@yahoo.ca



**Bev John**  
bev-jprf@fsjames.com



**Amelia Stark**  
amelia-jprf@fsjames.com



**Annie-Jean Anatole**  
annie-jprf@fsjames.com

**Phone: 250-996-0028 (JPRF)**

### Pictures from the First Forest Team Meeting



Getting Photovoice training with the cameras!

FT members working together during our group discussions



Enjoying talking with each other at lunch

