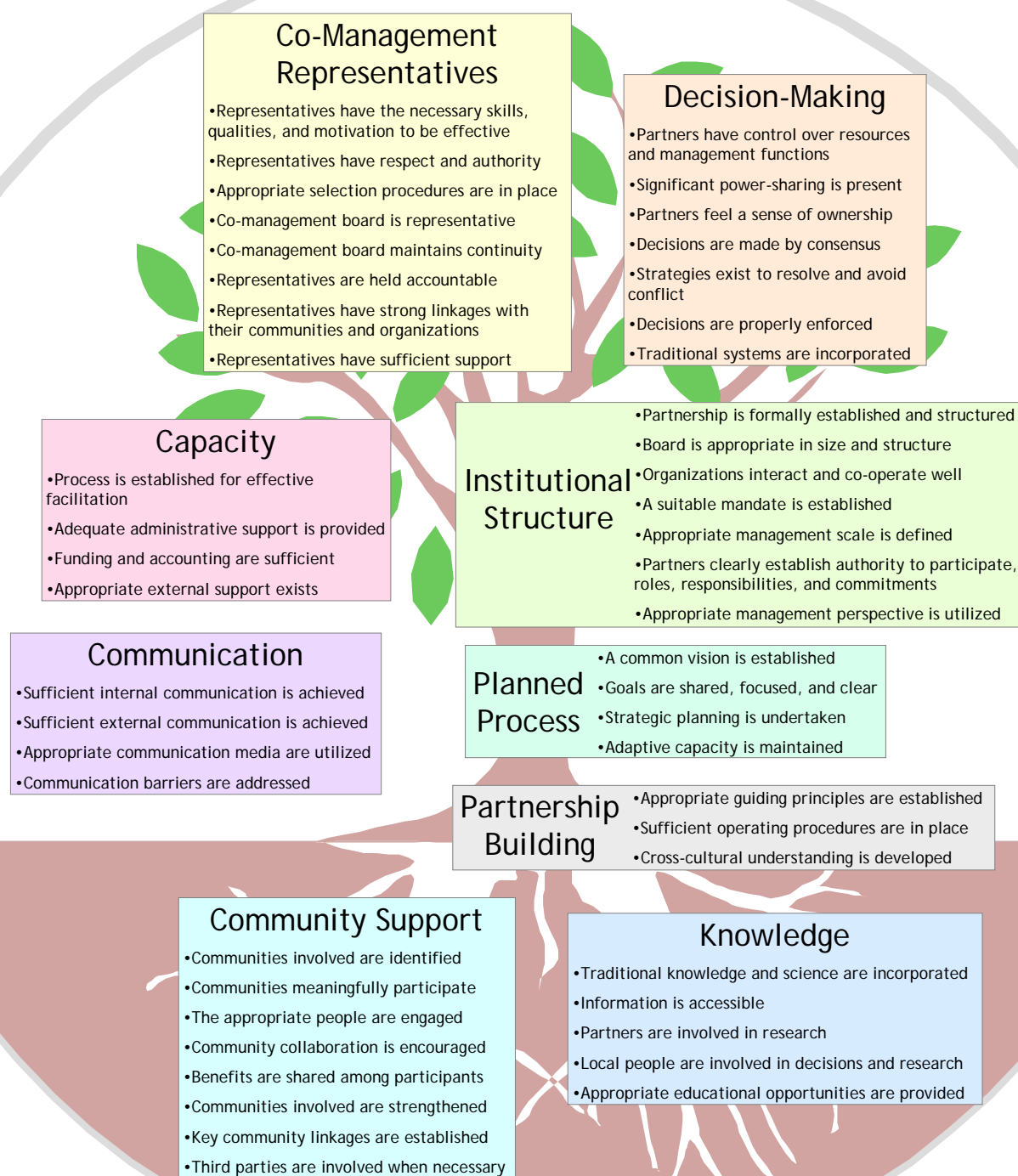


Processes Required for Successful Co-Management: Information from Literature and Case Study Analysis

Criteria and Indicators of Joint Forest Management

E. Sherry, G. Fondahl, S. Parsons, and R. Halseth, UNBC



Criteria and indicators (C&I) of a successful co-management process were identified by analyzing the theoretical co-management literature and evidence from existing case studies. Nine criteria were identified and each is described by several related indicators. While this is not intended as a comprehensive framework, it reflects many conditions that are of fundamental importance to forest co-management.

Information used in this analysis included both published and unpublished materials, covering the subjects of resource co-management in national and international contexts, community-based resource management, community forestry, forestry joint ventures, shared decision-making, and sustainable forestry. Sources were identified using electronic databases, electronic journals, and library catalogues. Published bibliographies provided valuable guidance on relevant literature.

On-line searches of important web sites were conducted (e.g., Canadian Forest Service, National Aboriginal Forestry Association, Union of BC Indian Chiefs, Centre for International Forestry Research). Articles were acquired from researchers and practitioners involved in co-management. This framework helped us formulate interview questions, provides an opportunity to evaluate linkages between research results and existing C&I frameworks, and serves as a foundation for comparing the JPRF to other forest management partnerships.