

John Prince Research Forest

Background

A forest co-managed by Tl'azt'en Nation and the University of Northern BC

The John Prince Research Forest (JPRF) is jointly managed by Tl'azt'en Nation and the University of Northern British Columbia (UNBC) as a research and educational facility.

The broad objective of this partnership is to combine scientific and indigenous approaches to land management that integrate and enhance multiple resource values, and contribute to the ecological and social sustainability of the region.

By creating an outdoor laboratory and facility, Tl'azt'en & UNBC seek to provide a natural setting for forest resource research, education and demonstration. Through its projects and programs, the JPRF integrates community development as a part of its approach to sustainable forest management.

Forest Management

Forest management on the JPRF is regulated through provincial forest legislation and tenured through a Special Use Permit. The JPRF tenure requires that the forest be co-managed by the partners.

The JPRF is a working forest. Annually, approximately 13,000 m³ of timber (~45ha) is harvested from its 13,000 ha landbase, and is sold on the open market. The revenues from the sale of the logs provide the primary funding for JPRF programs. The management activities associated with harvesting and subsequent reforestation activities provide a setting for research. Forest operations and milling of timber contribute to local employment.

In 2002, the Cinnabar Resort on Tezzeron Lake was purchased for the JPRF. The facility provides accommodation for students and researchers, tourists, as well as a site for educational programs. The resort is popular for camping, fishing and hunting. So far, there are 22km of hiking trails, and interpretive programs are being developed.

Research

The JPRF operates as a research facility for researchers, and also has an internal research program. There are a range of research opportunities at the JPRF, including forestry operations; wildlife; recreation and tourism; environmental, social, cultural, and community studies. On-going research projects include integrating traditional knowledge

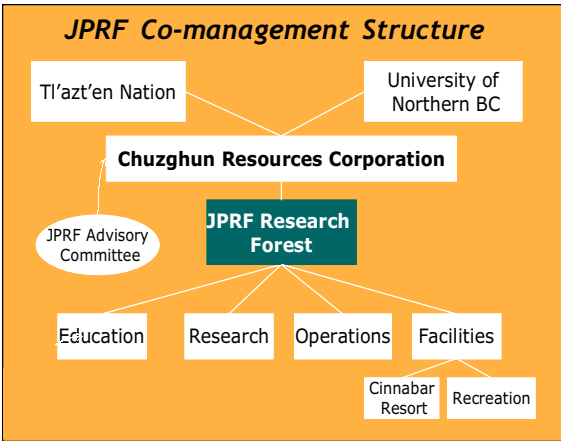


Tl'azt'en Nation

Tl'azt'en traditional territory covers an area of 6,560 km² just north of Fort St. James. There are four Tl'azt'en villages of about 750 people; another 750 Tl'azt'enne live off-reserve. Tache, located on Stuart Lake, is the administrative centre of Tl'azt'en Nation. Other villages include of Binche, Dzitl'ainli and seasonally on the Kuz Ghe. Tl'azt'en Nation is part of Dakelh linguistic group, affiliated with the Carrier Sekani Tribal Council.

University of Northern BC

The University of Northern BC (UNBC), established in 1994, was founded as "a university in the north, for the north". Located in Prince George, UNBC is committed to serving the northern region of BC by building partnerships and by being innovative, resourceful, and responsive to student and community needs. In the spirit of its Carrier motto-" 'En cha hun'a" - UNBC celebrates diversity and intends to reflect and to foster the rich cultural diversity of northern BC and its people. UNBC has about 3500 students, and a range of undergraduate and graduate programs, including natural resource management and First Nations studies.



The JPRF's Cinnabar Resort on Tezzeron Lake.

The Keyoh System

For generations, Tl'azt'enne have managed their traditional territory through the "keyoh" system. This system divides the territory into family controlled areas, where subsistence activities such as hunting, trapping, and gathering take place. Keyoh holders use, monitor, and manage the resources on their keyoh to provide a continuous supply of food and material for the survival of their family, and the benefit of the community. Today, other land uses and tenures overlap and sometimes conflict with this form of land stewardship.

Keyoh holders on the JPRF are recognized by representation on the CRC Board of Directors, and through a shared benefits package. Their values and concerns are incorporated into forest management planning and implementation. Consideration of individual Tl'azt'enne aspirations as well as community interests is considered an important part of the JPRF co-management approach.

into forest management, the historical forest restoration project, and criteria and indicators of co-management (this project). Recently, more research projects have been initiated on road access and moose, mule deer winter range, and outdoor education. More work is planned for baseline inventories, ecological restoration, beetle-proofing, and mixedwood trials.

Education and Training

The goal of JPRF education and training programs is to help create future natural resource managers and community leaders. For UNBC students, the JPRF hosts Forestry Field Camp and field trips for other students, including recreation, geography, forestry, fish and wildlife, and planning classes. There are also opportunities for student work experience and volunteering. For Tl'azt'enne, the JPRF has run culture and science camps, and arranged school field trips. Staff have also given class presentations in schools.

Training programs focus on capacity building through employment, work experience programs, and volunteer opportunities. One highly successful program is helping Tl'azt'enne youth build skills through the Recreational Trail Network and Interpretive Program.

Co-management Structure

To manage the JPRF, Tl'azt'enne Nation and UNBC created a non-profit company called **Chuzghun Resources Corporation (CRC)**.

This company is owned equally by the Tl'azt'enne Nation and UNBC and is managed through a Board of Directors. Each partner appoints their representatives. The Board of Directors provide strategic direction for the business and programs of the JPRF, and oversee its financial management and forest operations. Profit is reinvested in JPRF programs, services, activities and facilities.

An external Advisory Committee made up of representatives from governmental agencies, regional districts, forest industry and other local First Nations provide oversight and input into the research and educational programs.

Chuzghun Resources Corporation - Board of Directors

Chief Thomas Alexis, Jonathon Tom, Amelia Stark, William Pierre (alt.), Kathy Lewis, Sean Kinsley, Mayor Jim Togyi, Gail Fondahl (alt.)

JPRF Staff

Sue Grainger, *JPRF Manager*
 Dexter Hodder, *Program Coordinator*
 Ron Winser, *Community Liaison/Recreation Coordinator*
 Johnny Tom, *Forest/Research Assistant*
 Sabastian Anatole and Walter Bratton, *Caretakers*