

River name: Dome Creek
Mapsheet: 93H11 (Dome Creek)
Put-in coordinates: 53 35' 36.8" 121 04' 52.0"
Take-out coordinates: 53 39' 33.8" 121 03' 09.6"

Distance: 8.7km (to the flats/gravel pit)
Overall gradient: 165 fpm
Steepest gradient: 270 fpm for 600m

Directions Access will be the issue here. The shuttle will be long, as you have to drive down the Hungary Creek FSR – Tumuch FSR – Dome Creek Cutoff FSR to get to the put-in, and then you have to return to Highway 16 East and travel towards McBride to get a vehicle to the takeout on the Dome Creek Road. Take a look at the roads in the Northern BC Backroad Mapbook. The put-in is accessed via the same roads to get to the Vineyards hike. The take-out is accessed via the same roads to get to the Dome Mountain hiking trail.

Information This creek has been talked about as a potential kayak run for some years now. A buddy flew it in a helicopter and reported continuous grade 4 rapids. He didn't see any logjams, but that doesn't mean anything (see disclaimer below). FishWizard says there is an 8km fish-passable canyon, so there are likely no big waterfalls. The Dome has pretty good volume where it crosses the highway. Google Earth has low-res photos over the area. Looking at the gradient profile, there is a steep section (270 fpm) in the first kilometer, and then maybe another steep section around 6km into the run. Overall the gradient is similar to the Lower Dore. The map shows an abandoned cabin on river left around 3.6km into the run. ** Caution: FishWizard says there is a man-made log weir 1-2 km upstream from the highway. This is only an issue if you decide to float out to the highway (not recommended) instead of taking out at the gravel pit.

DISCLAIMER *THIS IS NOT A RIVER GUIDE. INFORMATION ON THIS RIVER IS VERY LIMITED AND IS CERTAINLY INCOMPLETE. PADDLING ANY RIVER IN BRITISH COLUMBIA IS DANGEROUS, ESPECIALLY UNKNOWN RIVERS SUCH AS THIS ONE. ALWAYS REMAIN ALERT FOR LOGS AND LOGJAMS – THEY ARE VERY COMMON ON BC INTERIOR RIVERS. THERE ARE LOTS OF OTHER HAZARDS AS WELL THAT COULD BE ENCOUNTERED AT ANY TIME. YOU ARE RESPONSIBLE FOR YOUR OWN SAFETY. MAKE SURE YOU HAVE APPROPRIATE SKILLS, EXPERIENCE, AND EQUIPMENT FOR THIS OR ANY OTHER RIVER..*

Dome Creek gradient

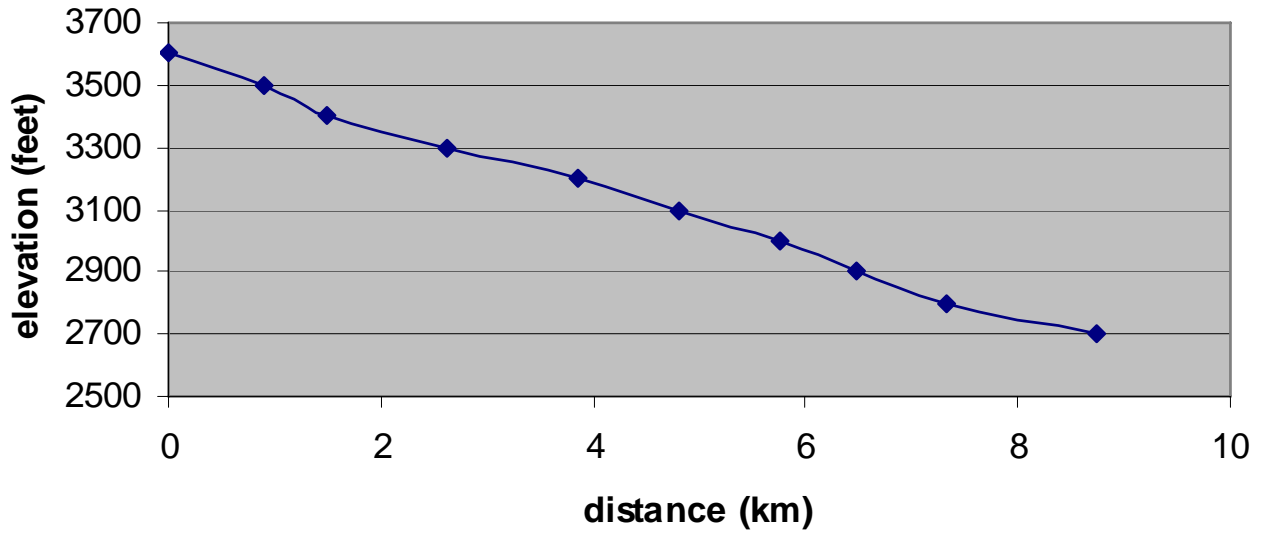




Figure 1. Dome Creek location in case you're not from Prince George.

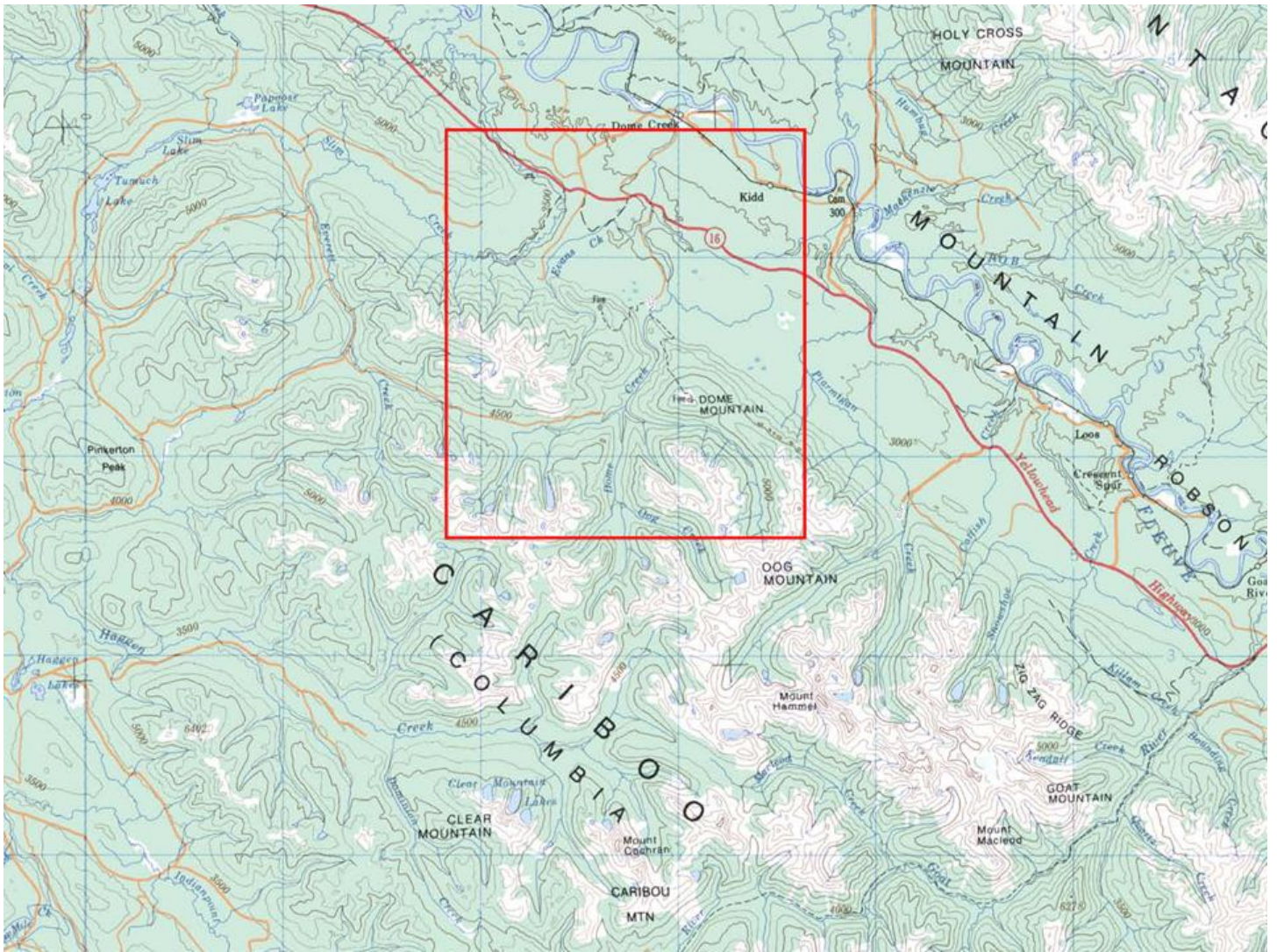


Figure 2. Dome Creek overview.

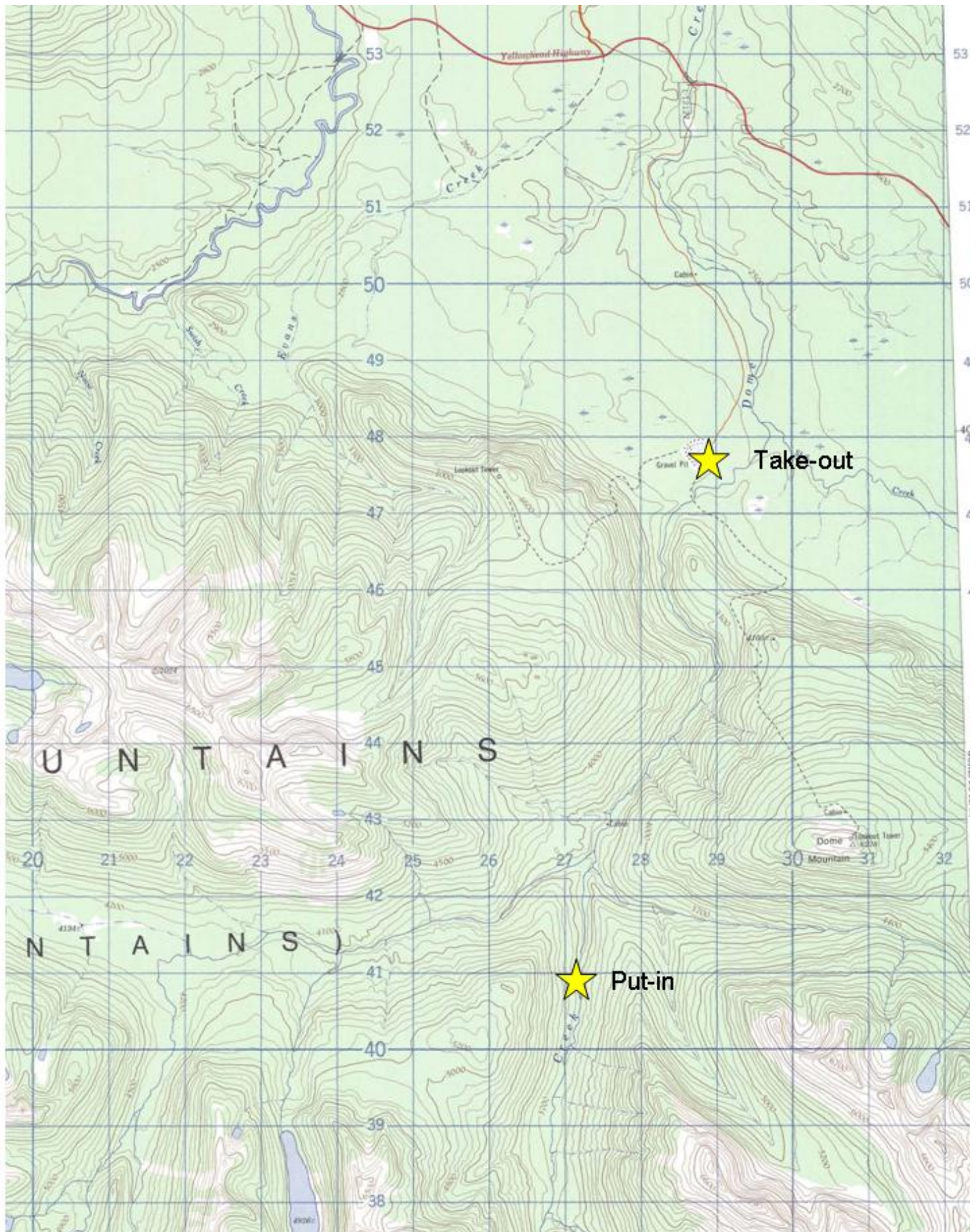


Figure 3. Dome Creek overview (detailed).

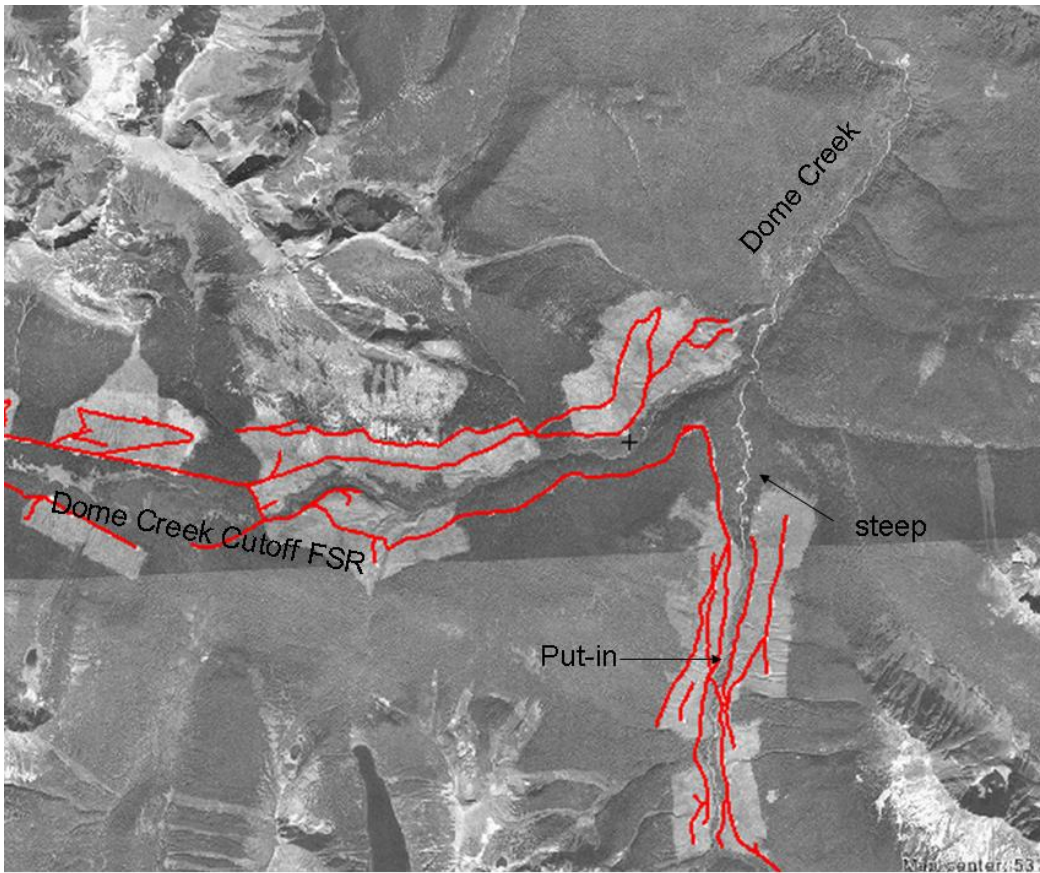


Figure 4. Satellite image of put-in. Roads are red.

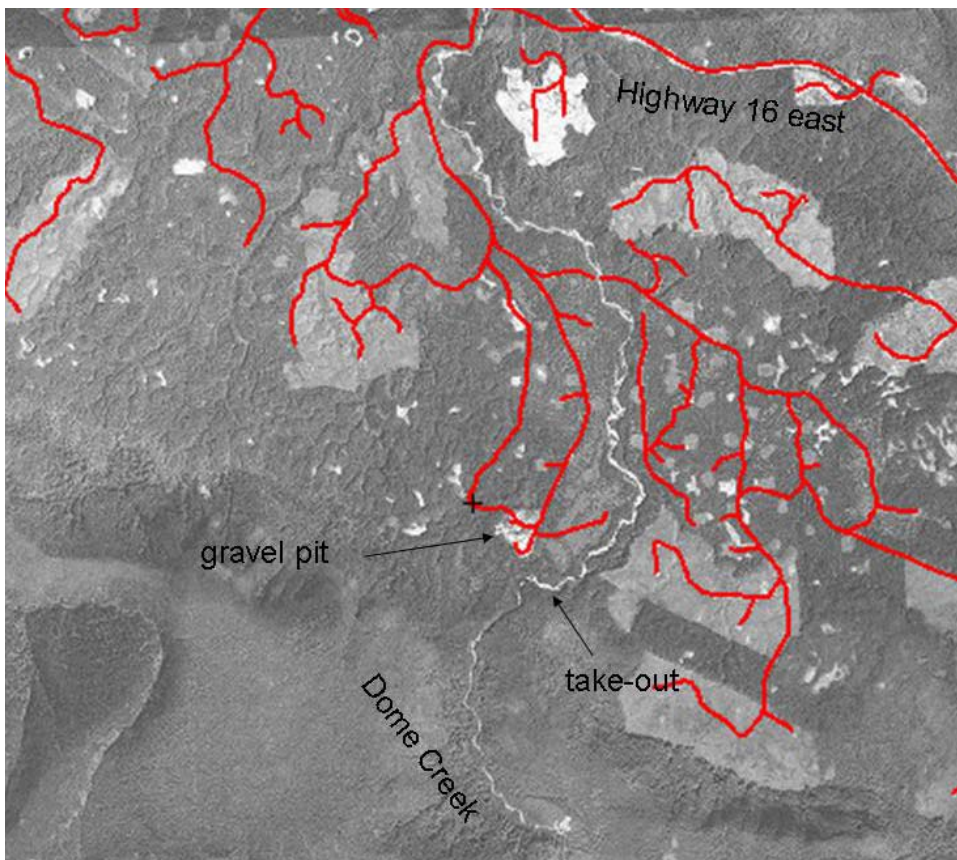


Figure 5. Satellite image of take-out.